

## Why use expert software? Why invest in a software program?



*Solar Technology is ever evolving*

*Manufacturers change products and components to adjust to new technologies and market needs. The tasks for design professionals are getting more and more complex.*

*The professional Software most Experts depend on !  
PVsol and Tsol software helps you keep up with the industry  
\* Frequent Updates incorporate new products on the market.  
\* One Line of Software Solutions takes care of your needs to design optimized and cutting edge performance  
**Photo Voltaic Systems and Solar Thermal Systems***

### Customers are looking for professional design

Investing in a Solar System is a commitment in the future, but the associated costs demand an optimized design and layout of the system your customer will depend on.

#### Key words are:

**Reliability** - are the components capable of doing the job?

**Performance** of the system – how will it perform compared to others?

**Optimization** - all components should be selected for top performance. What equipment components in combination with others yield **higher output**?

Systems **Location** and **Orientation** to maximize harnessing the sun's energy.

**Weather-data** what type and amount of solar radiation can be predicted?

What **amount of Solar energy** can be used for heating, hot water, electricity year round?

**Cash-Flow** what will the system cost? How will the pay back be over time?

**Financing** scenarios - how will a loan work out?

What **running costs** must be expected?

What **maintenance costs** can be expected?

**Cost savings** compared to standard fuel operated equipment.

How much **Carbon Dioxide** exhaust can be avoided?

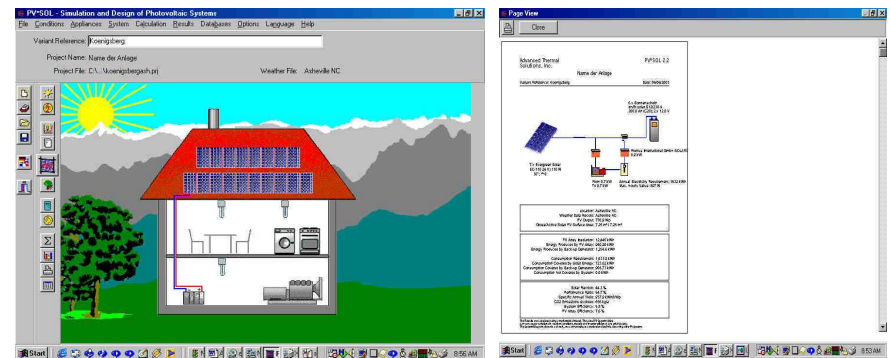
Those are just some of the questions your customer should ask and will ask. Like with any other investment - *are you prepared to backup your recommendations and results with professional calculations and unbiased knowledge?* Based on state of the art scientific knowledge and professional data you can provide your customer with the information needed to make an educated decision on the system and components to invest in.  
*Are you prepared to provide professional consulting and better answers?*

Do I need to be a computer expert to use these programs?

### Advantages in a nutshell

- ... Easy to understand and easy to operate!
- ... Time savings – Projects are set up in no time!
- ... US weather data is available for all major cities.
- ... Commercial, industrial, residential projects.
- ... Weather data can be added.
- ... System profiles can be saved and used over
- ... Great looking professional results can be presented!
- ... Different custom made reports can be generated.
- ... Simulations can be run 24/7/365 with screen out-put!
- ... Easy to understand summarized print outs.
- ... Proven Technology -worldwide! – and more

### PV SOL - the expert software for Photo Voltaic Systems



#### Professional Design and System Layout

Easy on screen project handling

Great looking print outs

Extensive data base for components

Custom profiles for Equipment can be added

Load profile for appliances can be used and altered

In Depth Weather data base for the US

Economy Calculations / Running costs / Financing / Payback time scenarios.

And more – ask us for a demonstration !

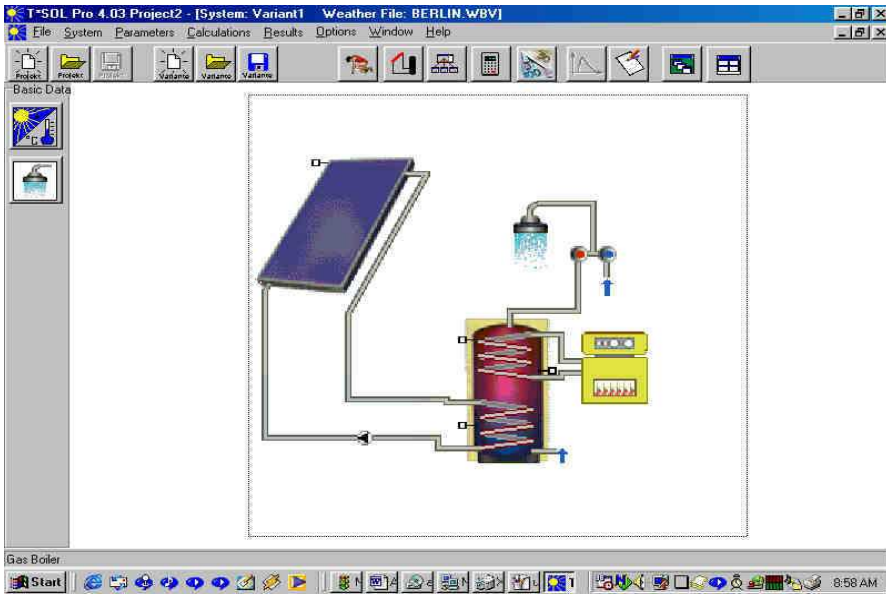
Excellent addition to other programs like CAD programs for graphical system design.

Great for presenting a project to a client.

Better service for Contractors to promote an estimate!

Grid connected or Stand alone systems.  
Back up generator simulation.  
Load profile for components like batteries.

## T SOL - the expert software for Solar Thermal Systems



## Working with Solar providing Expert Design



### Professional Design and System Layout

Easy on screen project handling  
 Great looking print outs  
 Extensive data base for components  
 Custom profiles for Equipment can be added  
 Load profile for appliances can be used and altered  
 In Depth Weather data base for the US  
 Economy Calculations / Running costs / Financing /  
 Payback time scenarios  
 And more – ask us for a demonstration !

On screen 24/7/365  
 Solar load simulation.  
 Excellent  
 Visualization Tool !

Other modules for  
 swimming pool and  
 commercial size solar  
 systems available.

Excellent addition to other programs like CAD programs  
 for graphical system design.  
 Great for presenting a project to a client  
 Better service for Contractors to promote an estimate

Please contact us on pricing, installation know-how, other product information, technical support and software packages you may require to utilize these professional tools on your next project!  
 How about a demo version (limitations only weather data for one city (Rome) not all functions available) – call us.

## Professionalism with Expert Software

Presented by:

**Advanced Thermal Solutions, Inc.**  
 P.O. Box 1182, Saluda, NC 28773  
 Tel: (828) 749-1774 and (828) 692-5392  
 E-mail: [atsinc@mchsi.com](mailto:atsinc@mchsi.com) [www.gotsun.com](http://www.gotsun.com)



**Expert Software**  
**Considering Economical Consequences**